



Vocational Air Traffic Controller User Guide



RESTRICTED USE
Access Limited to Authorized Personnel

The information contained in this document is the proprietary information of By Light Professional IT Services, LLC.

Contents

- Air Traffic Controller System Features..... 3
- Setup and Shutdown..... 3
 - Setup 3
 - Shutdown 4
- Player Instructions 5
 - Registration 5
 - Directing and Landing Aircraft 6
 - Proximity Warning 7
- Operator Instructions..... 8
 - Configuration Menu..... 8
 - Export Lead Data 11
 - Lead Generation Web Application Data 12
 - Adjust Audio volume of attract videos. 12
 - Data File 13
 - Finding the Data File, within the PC..... 13
- Troubleshooting..... 14
- Revision Log..... 16

RESTRICTED USE
Access Limited to Authorized Personnel

The information contained in this document is the proprietary information of By Light Professional IT Services, LLC.

Air Traffic Controller System Features

By Light's Air Traffic Controller (ATC) Experience is a tool for military recruiters to convert prospects into leads by storing lead contact information if they are within the correct age range. Contact information is stored locally on each system and can be retrieved by recruiters.

While no player is on the system, attract videos are played. These videos were supplied by the Army National Guard and relate to the Air Traffic Controller military occupational specialty.

Players are tasked with guiding aircraft to a runway or helipad with the goal of not allowing aircraft to collide. Points are gained by landing aircraft safely. The game ends when two aircraft collide. The player's score gets placed into the leaderboard. The leaderboard is displayed after each experience and induces competition between players.

The ATC Experience includes the following features:

- Gameplay is for entertainment and awareness to Air Traffic Controller military occupational specialty at recruiting events. The gameplay induces a taste of the stress an ATC operator experiences on the job.
- Lead Generator: Collects and stores contact information for prospects between the ages of 17 and 34.
- The system attracts and holds attention, giving recruiters greater opportunities to interact with prospects/leads.
- The ATC Experience promotes competition. A leaderboard is displayed between each attract video. Detailed welding results are displayed after each weld.

Setup and Shutdown

Setting up and shutting down the system takes less than 3 minutes and requires no tools.

Setup

To setup the system, follow this procedure:

1. Open the case.
 - a. With the system laying on the floor and the "This side up" labels in the correct orientation, unlatch all the case latches.
 - b. Mount each case latch to the magnets to hold the latches in place.
 - c. Open the case and allow the top section to rest on the restraints.
2. Unfold the secure the stand
 - a. Grasp the orange lifting handle and raise the stand assembly to the upright position.
 - b. While supporting the stand assembly, secure the latch on the left and the latch on the right.

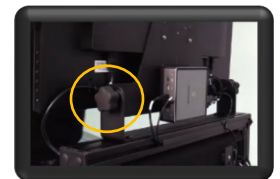
RESTRICTED USE
Access Limited to Authorized Personnel

Make sure each latch is properly locked into position.



3. Setup Monitor

- a. Loosen the locking knobs at the base of the monitor, rotate the touchscreen display to the upright position, and then tighten the locking knobs.



4. Install mid assembly (optional)

- a. Install the mid assembly to the cross support. Align the support hooks to the stand assembly crossbar. Push the hooks onto the crossbar to ensure it is secure.

5. Power up the system

- a. Plug in the power strip's cable into a power outlet and switch it on. After a few moments, the system will be ready to go.

Shutdown

To shut down the system, follow this procedure:

1. Power Down

- a. Turn off the computer by briefly pressing the power button on the computer. Allow Windows 10 to go through the shutdown process before proceeding.
- b. Turn off the switch on the power supply, unplug, and stow the cable.



2. Fold down monitor

- a. Loosen the knobs at the base of the monitor while holding the monitor in place.
- b. Carefully rotate the monitor back against the frame and tighten the knobs.

Do not allow the monitor to rotate too quickly as this may cause damage.

3. Fold down the stand

- a. Unlock the two latches on the left and the right

RESTRICTED USE
Access Limited to Authorized Personnel

- b. While holding the orange handle, carefully lower the stand down into the case.

Do not allow the stand to fold down quickly as this may cause damage.

4. Close the case

Make sure all accessories are stowed properly and everything is strapped into place.

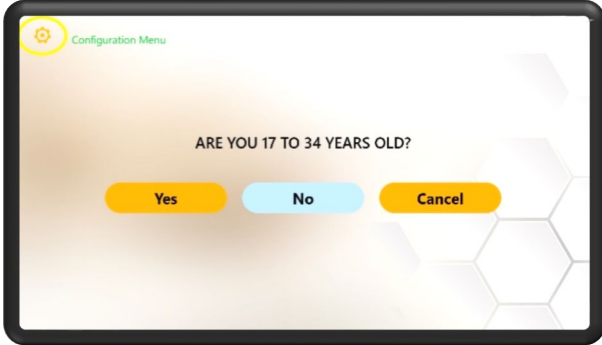
- a. Close the lid.
- b. Latch all case latches.

Player Instructions

The following includes instructions on how a player uses the ATC experience from start to finish.

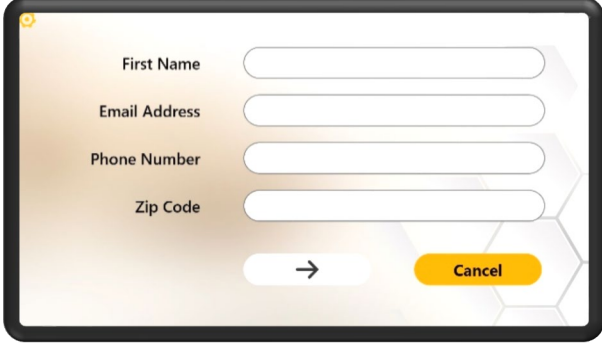
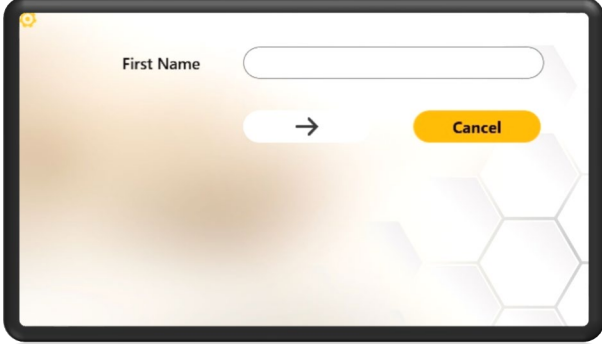
Registration

Once a player touches the monitor, the application will enter registration mode.

	<p>The player then answers if they are within recruitment age of 17 to 34.</p> <p><i>If the Yes and No buttons are not registering properly, please try double tapping the buttons.</i></p>
--	---

RESTRICTED USE
Access Limited to Authorized Personnel

The information contained in this document is the proprietary information of By Light Professional IT Services, LLC.

	<p>If the player answered Yes to the previous question, they must then enter their contact information which includes First Name, Email Address, Phone Number, and Zip Code.</p> <p>Tap inside the text fields to open the virtual keyboard. Use the touch keyboard to enter contact information.</p> <p>The email address field must have “@” and “.” characters to allow the user to proceed.</p> <p>Tap “Enter Arrow” to proceed to the experience.</p>
	<p>If the player answered No to the previous question, they only need to enter their first name.</p> <p>Tap the text field to open the touch keyboard at the bottom.</p> <p>Tap “Enter Arrow” to proceed to the experience.</p>

Directing and Landing Aircraft

Direct aircraft by pressing and holding a finger on the aircraft’s body then dragging finger across the screen to create a path. Re-direct the aircraft by following the same procedure.

Place the end of the aircraft’s path on the edge of the runway or the center of a helipad (depending on aircraft type) to land.

There are two types of aircraft:

- Fixed wing
- Rotary wing

Fixed winged aircraft include the C-130 transport and RQ-7 Shadow UAV. The C-130 can only land on the large runway from the right. The C-130’s path and spawn arrow indicator are color coded as **green**.

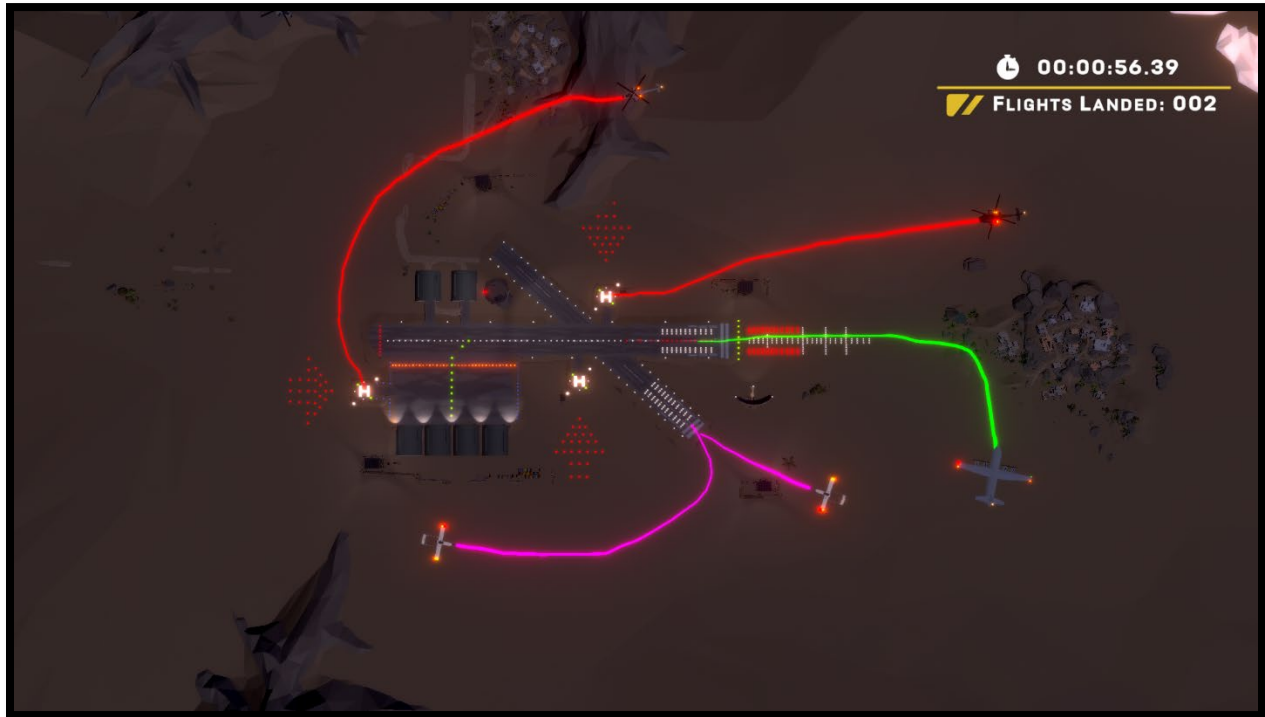
RESTRICTED USE
Access Limited to Authorized Personnel

The information contained in this document is the proprietary information of By Light Professional IT Services, LLC.

The RQ-7 can only land on the small runway from bottom-right to top left. The RQ-7's path and spawn arrow indicator are color coded as purple.

Rotary wings include the AH-64 Apache and UH-60 Blackhawk. The rotary winged aircraft may land on any helipad from any direction. The Apache and Blackhawk's path and spawn arrow indicators are color coded as red.

See image below for details on aircraft landing directions:



Proximity Warning

If any two aircraft get too close, the proximity warning indicator will turn on. This warns the ATC that two or more aircraft are close together. A visual and audio cue will play.

See image below for example.

RESTRICTED USE
Access Limited to Authorized Personnel

The information contained in this document is the proprietary information of By Light Professional IT Services, LLC.



Operator Instructions

Configuration Menu

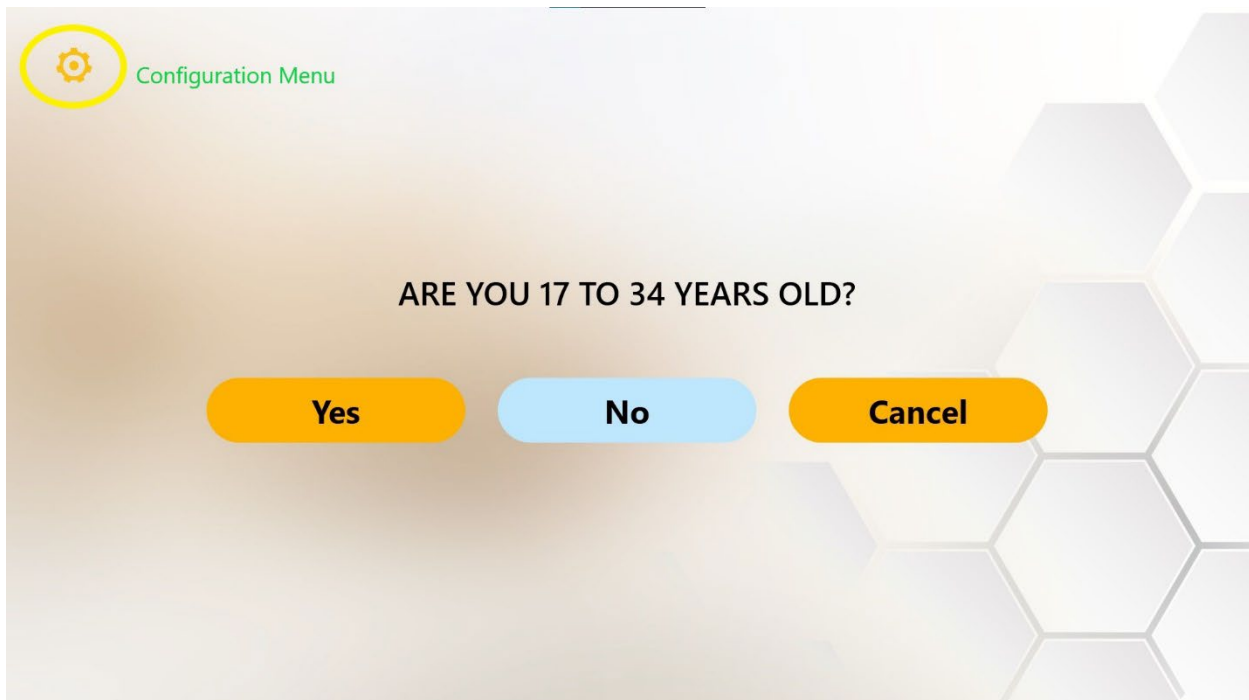
The configuration menu gives the operator several options. Please see below for more information.

To open the Configuration menu, perform the following procedure:

1. If not a touch screen model, plug a USB keyboard into the computer.
2. Touch screen. It should take you to the start of the User Registration.
3. While in the User Registration, press the cog icon in the top left corner.

RESTRICTED USE
Access Limited to Authorized Personnel

The information contained in this document is the proprietary information of By Light Professional IT Services, LLC.



4. This will open the Configurations menu.

- Username: admin
- Password: operator

RESTRICTED USE
Access Limited to Authorized Personnel

The information contained in this document is the proprietary information of By Light Professional IT Services, LLC.

Name/Event Title

Attract Audio Volume - +

Player Registration Timeout (sec)

Leaderboard Reset

Export Lead Data

Close

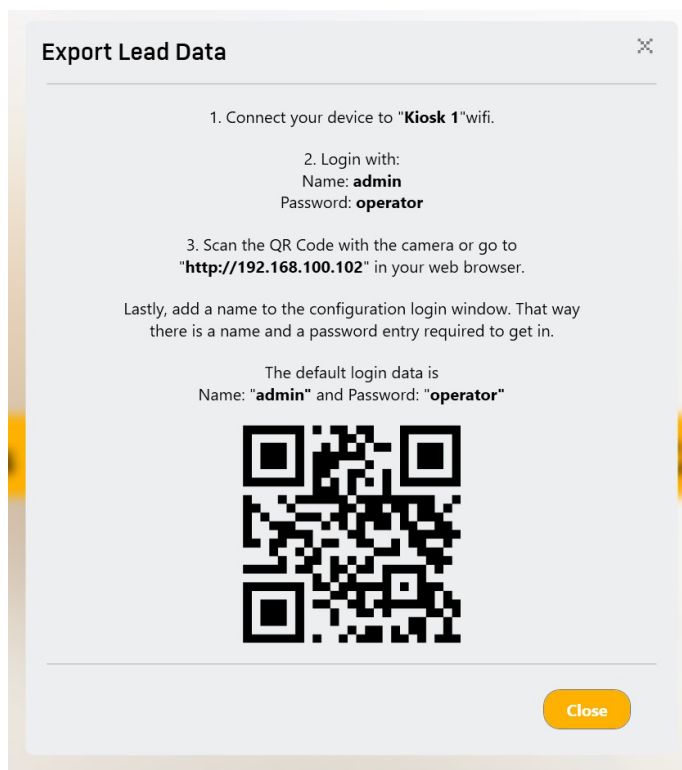
5. Configuration settings can be set per operators' preferences.
6. Attract Video Volume will adjust the master volume of the Attract Videos.
7. Player Registration Timeout will be for the user registration entry screen. If the screen isn't interacted with, within that set time, it will revert to the Attract Screen.
8. Leaderboard Reset will reset Lead Data displayed between attract videos
 - Note: This does not delete the data file. It only clears the leaderboard that is displayed in attract mode. This feature may be useful for promoting competition. For example, if the leaderboard is cleared at the beginning of a school-based event, everyone on the leaderboard will be from the same school.

RESTRICTED USE
Access Limited to Authorized Personnel

- Export Lead Data will allow the operator to gain access to the Lead Generation Web Application/User Data

Export Lead Data

Once the operator clicks the Export Lead Data button in the Configuration Menu, the following screen will pop-up.



RANK	NAME	SCORE
1	JHtst001	605
2	TST001	45
3	gfrs	0
3	gfd	0
3	TST1	0
3	TSTUA001	0
3	hf	0

For Cellular Devices:

1. Ensure wamp64 virtual server is operating on Kiosk (Start > wamp64 > wamp64).
2. Connect your device (Android or iPhone) to Wi-Fi "Kiosk 1" (default name).
3. Wi-Fi username/password should be: admin/operator
4. Once connected to the virtual server, use camera or QR Code reader to connect to <http://192.168.100.102> in Safari, Google Chrome, or applicable browser.
5. Once the browser loads, login with username: admin password: operator

RESTRICTED USE
Access Limited to Authorized Personnel

The information contained in this document is the proprietary information of By Light Professional IT Services, LLC.

For Kiosk Web Browser:

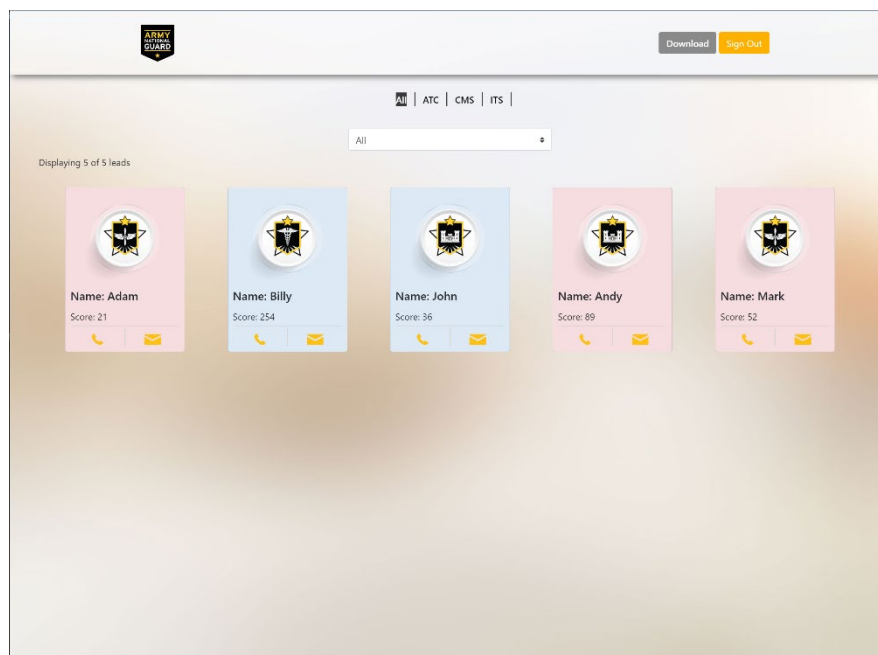
1. Ensure wamp64 virtual server is operating on Kiosk (Start > wamp64 > wamp64).
2. Open Microsoft Edge, Google Chrome, or Mozilla Firefox and enter <http://192.168.100.102> in the address bar.

Once the browser loads, login with:

- Username: admin
- Password: operator

Lead Generation Web Application Data

1. Each user experience will be recorded on the web server and will contain exact information pulled from recruit data files.
 - Please see [Accessing the Data](#) file for more information on data file retrieval.
2. Clicking on the Phone or Email icons will provide operator with the users entered information. If the player was under the age of 17, no identifiable information other than name will be available.



Adjust Audio volume of attract videos.

The Audio Volumes slider adjusts the volume of the attract videos, independent of the experience. This is useful if it is desired to increase or decrease the volume of attract vs. experience modes.

RESTRICTED USE
Access Limited to Authorized Personnel

The information contained in this document is the proprietary information of By Light Professional IT Services, LLC.

Data File

All player registration data and experience scores are stored in a .CSV data file. The data file is updated after each player's experience.

The data file stores the following data per player:

- OperatorCustomValue – This is a string of characters input in the Configurations menu.
- FirstName – First name entered by the player
- EmailAddress – Email Address entered by the player
- RecruitableAge – True or False. True if player entered Yes for the 17 to 34 age question.
- PhoneNumber – Phone number entered by the player.
- Zip Code – Zip Code entered by the player.
- ExperienceName – Name of Experience. This is useful if combining the data file with other data files from different experiences.
 - ITS – Information Technology Specialist
 - ATC – Air Traffic Control
 - MTO – Motor Transport Operator
 - HCE – Horizontal Construction Engineer
 - CMS – Combat Medic Specialist
 - FF – Fire Fighter
 - UAV – Unmanned Aerial Vehicle Operator
- Score – Score received in experience.
- StartTime – Time the player started the experience.
- EndTime – Time the player finished the experience.

Finding the Data File, within the PC

To find the data file, perform the following procedure:

1. Plug in a USB keyboard into the computer.
1. If in Registration mode, please press the back button on the top left.
2. Press "**Escape**" in attract mode to exit the application back to the desktop.
3. Click on wamp64 server icon on task bar, by the clock.
4. Select Localhost.
5. A website page should autoload with the login page.
 - Username: admin
 - Password: operator
6. When the page loads, the user registration data should be visible, shown just like the Lead Generation Web Application Data.
7. Click "Download" and you should receive a prompt to "Open, Save, or Cancel."
8. Click "Save or Save as" to download the .CSV file.
9. The default save folder is This PC > Downloads.

RESTRICTED USE
Access Limited to Authorized Personnel

10. The most recent file date should be the file saved (scoring-date). This is the CSV data file.

Please follow Department of Defense guidelines for copying the file to another computer. Alternatively, the data file can be opened on the system to be viewed/photographed.

Troubleshooting

Please see the following table for troubleshooting steps.

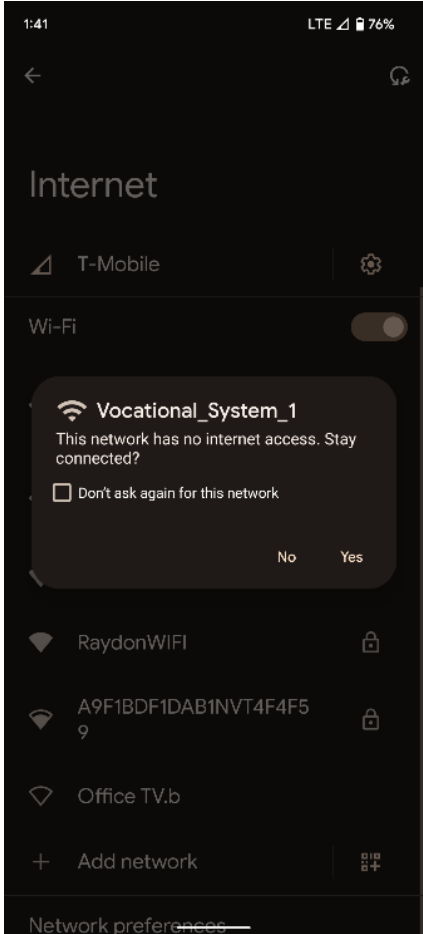
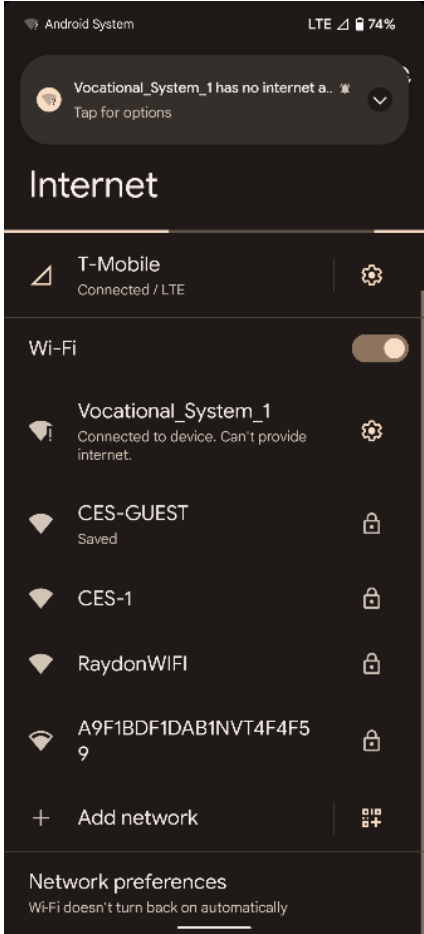
Problem	Possible Solution(s)
Unclear/Staticky Audio	<ul style="list-style-type: none"> • Check the connection on the back of the computer.
No audio	<ul style="list-style-type: none"> • Increase soundbar volume. • Check the power on the soundbar. • Check that the AUX input is selected on the soundbar.
Registration Buttons not working	<ul style="list-style-type: none"> • Double tap the registration button if a single tap does not progress to the next section.
Touch Screen Buttons not working	<ul style="list-style-type: none"> • May require multiple taps if a single tap does not progress to the next section
Not connecting to WIFI/Server	<ul style="list-style-type: none"> • Ensure User Name and Passwords are correct • Make sure Wamp64 server is running • Ensure Raydon user is logged in as Windows user

RESTRICTED USE
Access Limited to Authorized Personnel

The information contained in this document is the proprietary information of By Light Professional IT Services, LLC.

Depending on Cell Device, when wirelessly connecting to the VR system, additional steps may be required

- Google Pixel 6 requires a notification prior to connecting to web server. Wait for notification and select yes. You *must* receive a notification to access the web server



RESTRICTED USE
Access Limited to Authorized Personnel

