



**Mission  
Reconfigurable™**

**UNIVERSAL TRAINING PLATFORM  
THE NEW STANDARD**



# PRODUCTION FACILITY

Our production facility in Port Orange, Florida, (formerly Raydon Corp), specializes in military simulation training. Since 1988, we have blended commercial technology with the science of human performance to develop training systems for warfighters.

Our products are built from an open standards hardware and software architecture we call Mission Reconfigurable™ (MR). Building on this foundation, we can use the same base technology to animate almost any training system, especially those that feature a significant human-machine interface. All MR products can run together in the same training exercise.

We offer product life cycle management — concept, engineering design, integration, manufacture, deployment, and sustainment.

We also offer engineering and manufacturing support services.

By Light's simulation training innovation hub is a 112,000 square foot facility built specifically for the design, development, and production of complex virtual reality training systems.

- Instructional System Design -- We create learning experiences that are intuitive to the student and the operator, and we work tirelessly to improve the efficiency of knowledge transfer and retention.
- Simulation Software – Our core software has been designed to interoperate and integrate with multi-domain training systems, and our modular design approach allows us to incorporate third-party software whenever it improves our training solution.
- Hardware Engineering – Our reconfigurable training system architecture can adapt to any physical configuration or user fidelity without requiring the core software to be reprogrammed.
- Manufacturing and Assembly -- Our 50,000 square foot manufacturing space and IPC-trained electrical-mechanical assemblers are uniquely qualified to fill the widening gap between large-scale assembly line capabilities and low-rate production of complex equipment.
- Warehousing and Security – Our facility is access-controlled and camera-patrolled, including fenced parking for more than 30 trailers, 12 dock doors, a 24/7 spares depot, and plenty of pallet rack storage capacity.



# MISSION RECONFIGURABLE UNIVERSAL TRAINING PLATFORM *THE NEW STANDARD*



**Mission Reconfigurable™** is more than a product; it's a true open standards platform for military simulation training.

With an open standards design, MR hardware components are easy to replace or upgrade. A high-fidelity user-interface panel can be designed exactly like the real vehicle or simplified with touchscreen panels instead of switches and knobs – whatever the mission requires.

The MR platform is completely independent from the software – meaning the same MR hardware can be operated using any company's software.

***MISSION RECONFIGURABLE CAN TRAIN ANYTHING - MAKING IT THE NEW STANDARD.***



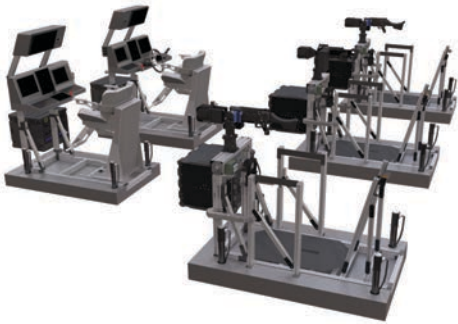




FIXED WING CREW TRAINING



OPTIONAL MOTION BASE



MARITIME WITH MOTION



RECRUITING EXPERIENCES

MISSION RECONFIGURABLE



# BENEFITS



## TIME

- Travel reduced with point of need capability
- Simple setup/tear-down, no tools/training needed
- Predictable throughput and time to proficiency



## COST

- Common parts mean efficient manufacturing, maintenance & support
- Modular design facilitates easier upgrades
- Lower lifecycle cost



## CHOICE

- Any physical configuration
- Mix and match fidelity options
- Any company's software
- Any company's hardware

## Point of Need Training

- Drill in psychomotor skills (hand-eye coordination)
- Develop and sustain cognitive skills (detection, recognition, identification, decision making, situational awareness, and communication)

## Portable

- Rugged two-man lift travel cases, pallet friendly
- Fits through any doorway
- Portable computer and electronics rack
- Wheeled cases for easy transport

## Fast and Easy Setup

- No tools required
- 11 minutes to set up crew trainer!
- Only one computer rack cable to connect each seat
- Single standard electrical connections (15A/120V or 20A/120V)

## Reconfigurable

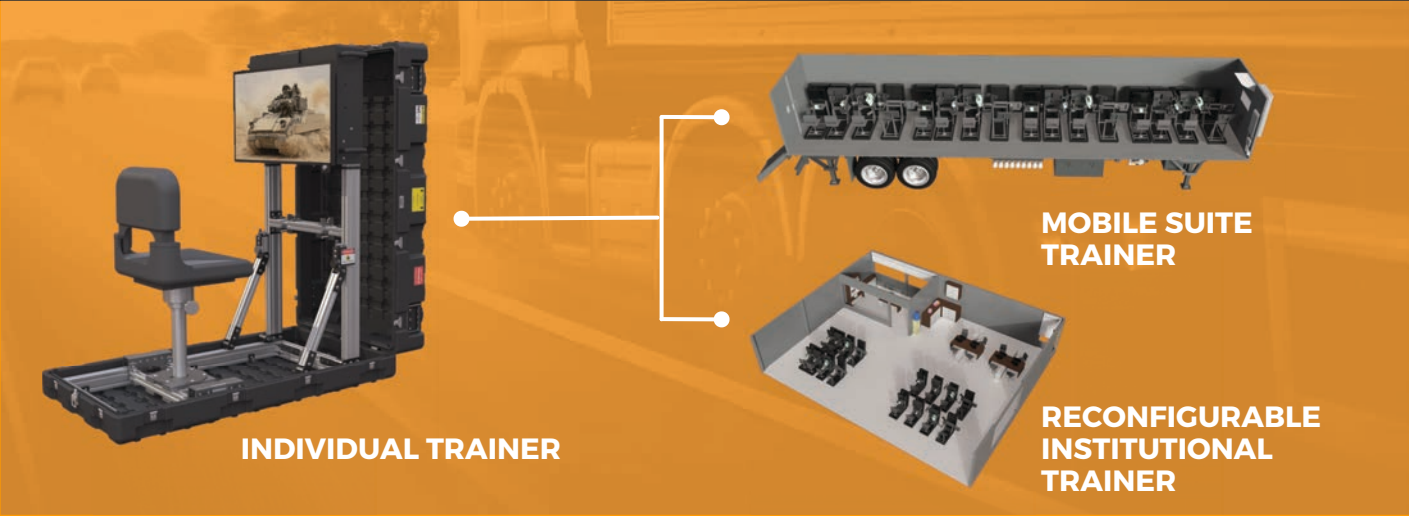
- Built with interchangeable dashboards, panels, consoles, weapons, and tactical peripherals
- Choice of appropriate fidelity level
- Fidelity options from detailed fully tactile panels with precise controls to lower-cost glass panels
- All Mission Reconfigurable trainers can be networked together to support collective training
- The flexible design can be adapted for trailers or fixed in place for institutional training
- Optional Instructor / Operator Station



# MR PLATFORM OPTIONS



<p>Handheld Tabletop Portable Trailer Institutional</p>	<p>Scalable Individual Training Crew Training Section → Platoon → Company Network Capable</p>	<p>Enduring Investment As modernization continues to impact vehicles, weapons, and communication, MR hardware components can be replaced or upgraded without a total system overhaul.</p>
---	---	---



MR is reconfigurable to any platform configuration. It is famous as the basis for the U.S. Army's RVCT, but MR is more than just that. Configured as a desktop trainer or installed in a trailer or hardened and set in place for permanent use in a facility, every platform configuration can work with other MR products. And all can run on the same software version.







# PORTABLE PLATFORMS



# GROUND VEHICLES



## ABRAMS

Driver, Commander, Gunner, and Loader  
120 mm, 7.62 Coax, Loader's MG, CWS



## BRADLEY

Driver, Commander, Gunner, and Gunner  
25mm Main Gun, 7.62 Coax, TOW Missile



## STRYKER

All critical Stryker platforms to support the training needs of a Stryker BCT



## COMBAT WHEELED

JLTV, HMMWV, M-ATV, and FMTV with weapons systems



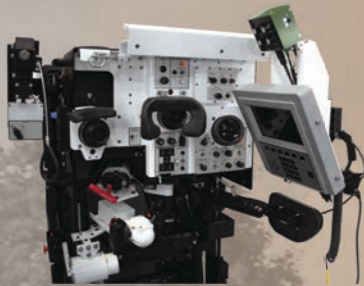
## LOGISTICS SUPPORT

HEMTT, HET, and M88, plus HMMWVs and JLTVs without weapons systems



## ABRAMS

Driver, Commander, Gunner, and Loader  
120 mm, 7.62 Coax, Loader's MG, CWS



**GUNNER UPPER SECTION**



**COMMANDER MIDDLE SECTION**



**LOADER, DRIVER, COMMANDER, AND GUNNER STATIONS**

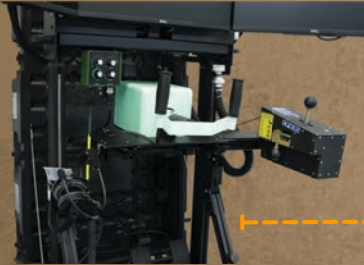


**DRIVER MIDDLE, AND LOWER SECTION**



## BRADLEY

Driver, Commander, Gunner, and Gunner  
25mm Main Gun, 7.62 Coax, TOW Missile



DRIVER MIDDLE SECTION



GUNNER UPPER SECTION



DRIVER, COMMANDER,  
AND GUNNER STATIONS

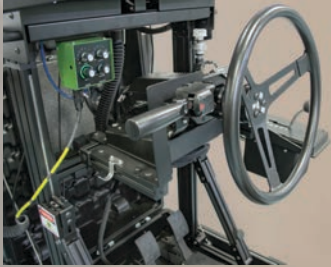


COMMANDER MIDDLE SECTION



## STRYKER

All critical Stryker platforms to support the training needs of a Stryker BCT



DRIVER MIDDLE SECTION



RWS GUNNER



DRIVER, COMMANDER, AND RWS GUNNER STATIONS



COMMANDER MIDDLE AND UPPER SECTIONS



## COMBAT WHEELED

JLTV, HMMWV, M-ATV, and FMTV with weapons systems



DRIVER MIDDLE SECTION



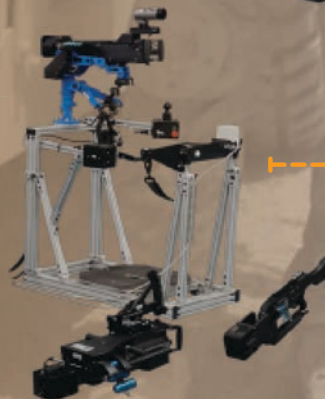
RWS GUNNER



DRIVER, COMMANDER, AND MMG GUNNER STATIONS



COMMANDER MIDDLE AND UPPER SECTIONS



MMG GUNNER



## LOGISTICS SUPPORT

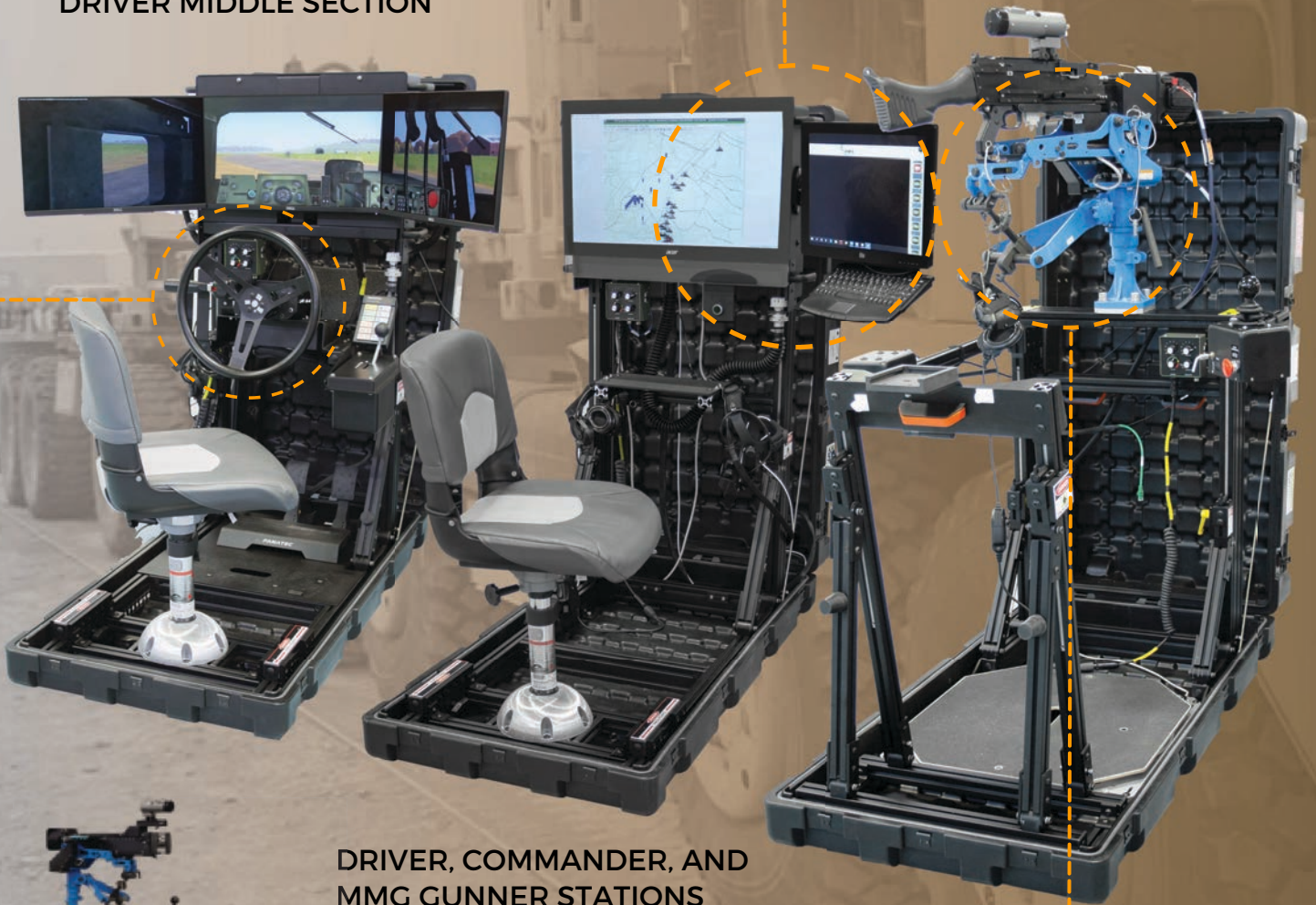
HEMTT, HET, and M88, plus HMMWVs and JLTVs without weapons systems



DRIVER MIDDLE SECTION



COMMANDER MIDDLE AND UPPER SECTIONS



DRIVER, COMMANDER, AND MMG GUNNER STATIONS



MMG GUNNER





We blend commercial technology with the science of human performance to develop training systems for warfighters.

Our open standards hardware and software architecture, Mission Reconfigurable (MR), is the technology foundation that can animate almost any training system, particularly those featuring a significant human-machine interface.

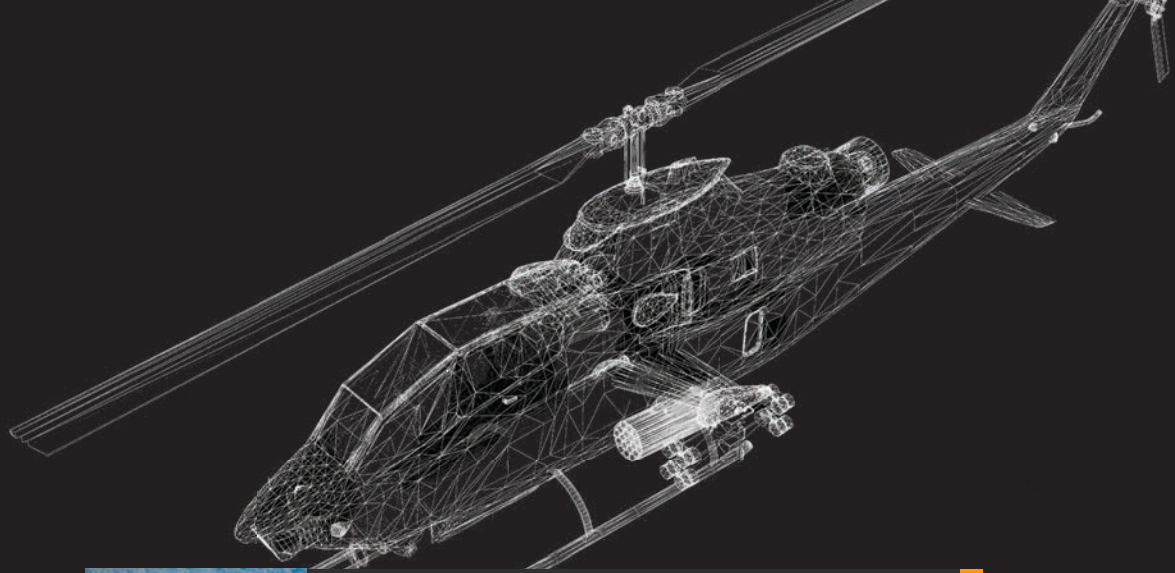
The MR simulation platform is designed to adapt to any military training requirement. It can flex in fidelity from handheld to portable to trailerized to institutional. MR supports training from individual to mission rehearsal and can easily be configured to train crews operating ground vehicles, aircraft, naval vessels, or construction equipment. ***All MR products can run together in the same training exercise.***

We provide product life cycle management: concept, engineering design, integration, manufacture, deployment, and sustainment.



**PORTABLE PLATFORMS**

# AIRCRAFT



## APACHE

Pilot and Co-Pilot positions



## BLACKHAWK

Pilot and Co-Pilot, and Non-Rated Crew positions



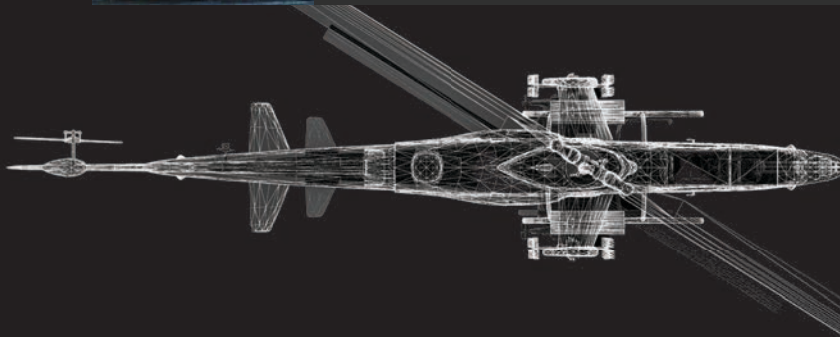
## CHINOOK

Pilot, Co-Pilot, Non-Rated Crew, and Ramp Gunner positions



## UAS

Pilot/Platform Operator and Payload Operator positions





# APACHE

Pilot and Co-Pilot positions



PILOT STATION, UPPER SECTION



GUNNER STATION, UPPER SECTION



PILOT AND CO-PILOT GUNNER STATIONS



## BLACKHAWK

Pilot and Co-Pilot, and Non-Rated Crew positions



DOOR GUNNER STATION



BLACKHAWK PILOT AND CO-PILOT STATIONS

BLACKHAWK PILOT AND CO-PILOT STATIONS



**\*\* HOIST OPERATOR STATION NOT PICTURED**



# CHINOOK

Pilot, Co-Pilot, Non-Rated Crew, and Ramp Gunner positions



CHINOOK OVERHEAD CONSOLE



DOOR GUNNER STATION



CHINOOK PILOT AND CO-PILOT STATIONS



COCKPIT CENTER CONSOLE



## UAS

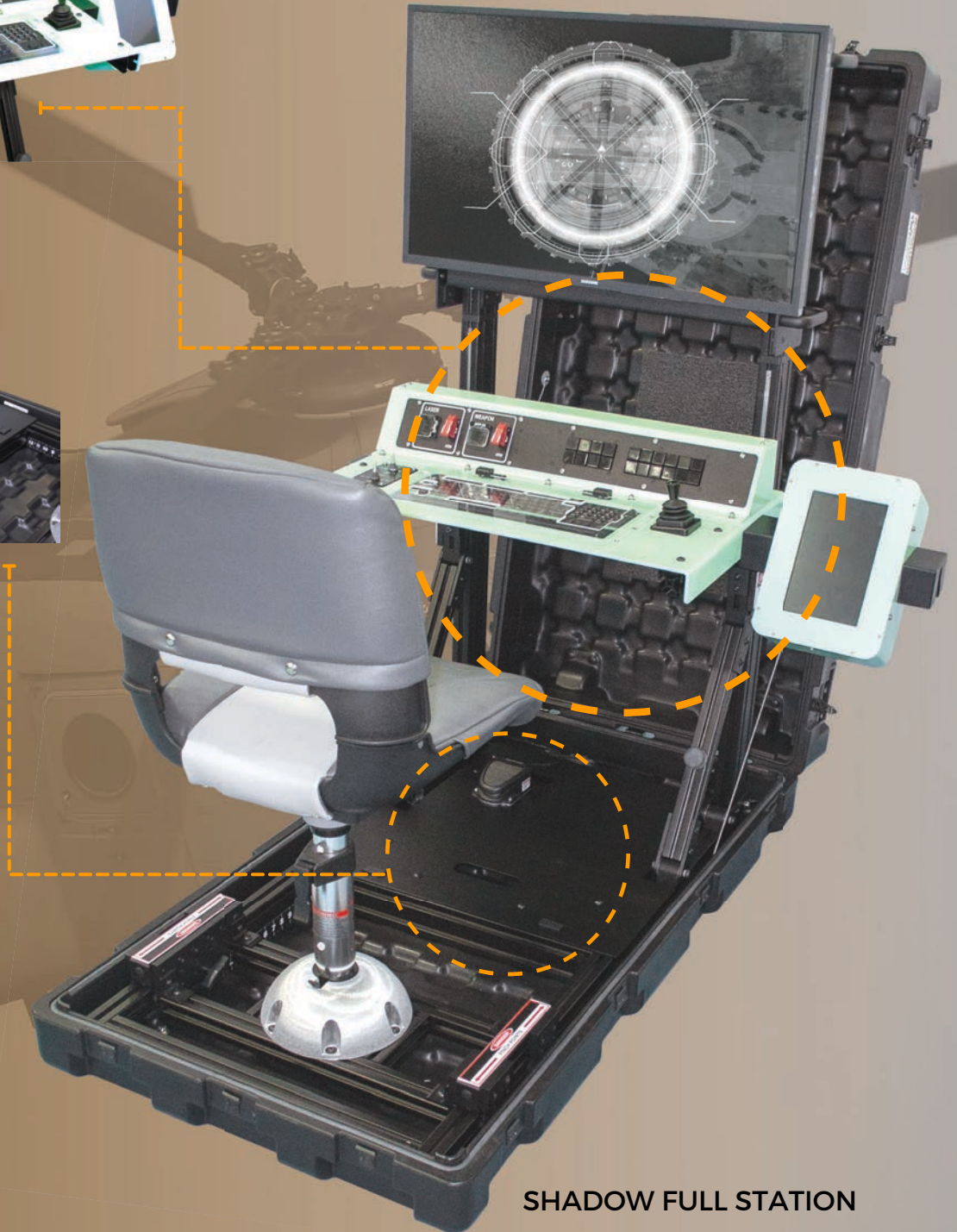
Pilot/Platform Operator and Payload Operator positions



SHADOW MIDDLE SECTION



SHADOW BOTTOM SECTION



SHADOW FULL STATION



# Mission Reconfigurable™



By Light Professional IT Services LLC  
1420 Hockney Ct., Port Orange, FL 32128  
+1 (386) 267-2936 | [info@bylight.com](mailto:info@bylight.com)

© 2022, By Light Professional IT Services LLC. All Rights Reserved.

CLT-138-02 | March 23, 2022

